

# Time To Ready IPM Plans For 2013

## PRINCETON, KY.

**D**uring the 2012 growing season, Kentucky producers faced many new and unusual challenges due to the severe drought. The University of Kentucky's Integrated Pest Management School will discuss these issues and other timely topics to help producers kick off their 2013 IPM programs.

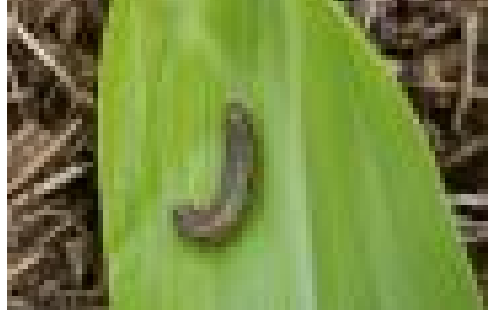
The school is March 6 at the UK Research and Education Center in Princeton.

Registration begins at 8 a.m. CST. Speakers include specialists from the UK College of Agriculture and the Kentucky office of the Natural Resources Conservation Service. They will lead presentations on the following topics: insect vectored diseases; NRCS IPM; managing marestail; slugs, birds and rodents in no-till corn and soybeans; integrated soybean disease management; high input soybean systems; anhydrous ammonia reactions in the soil, and a conservation activity plan for herbicide resistance.

The event is approved for the following pesticide applicator education hours: three general and one specific in categories 1A, 4, 10, 12 and 14. Five continuing education units are avail-

able for Certified Crop Advisors including 2.5 in integrated pest management, 1.5 in soil and water management and 0.5 each in nutrient management and crop management.

The school is free, and lunch is provided. The entire program and directions to the UKREC are available on the UK IPM website, <http://www.uky.edu/Ag/IPM/ipm.htm>. For more information, contact Patty Lucas, UK IPM extension specialist, at [plucas@uky.edu](mailto:plucas@uky.edu) or 270-365-7541, ext. 218. Δ



**An armyworm on corn**

PHOTO: Courtesy of Patty Lucas, UK IPM extension specialist